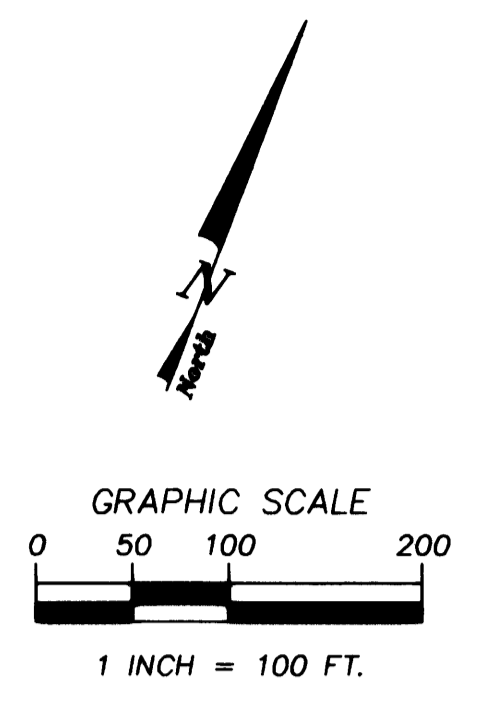


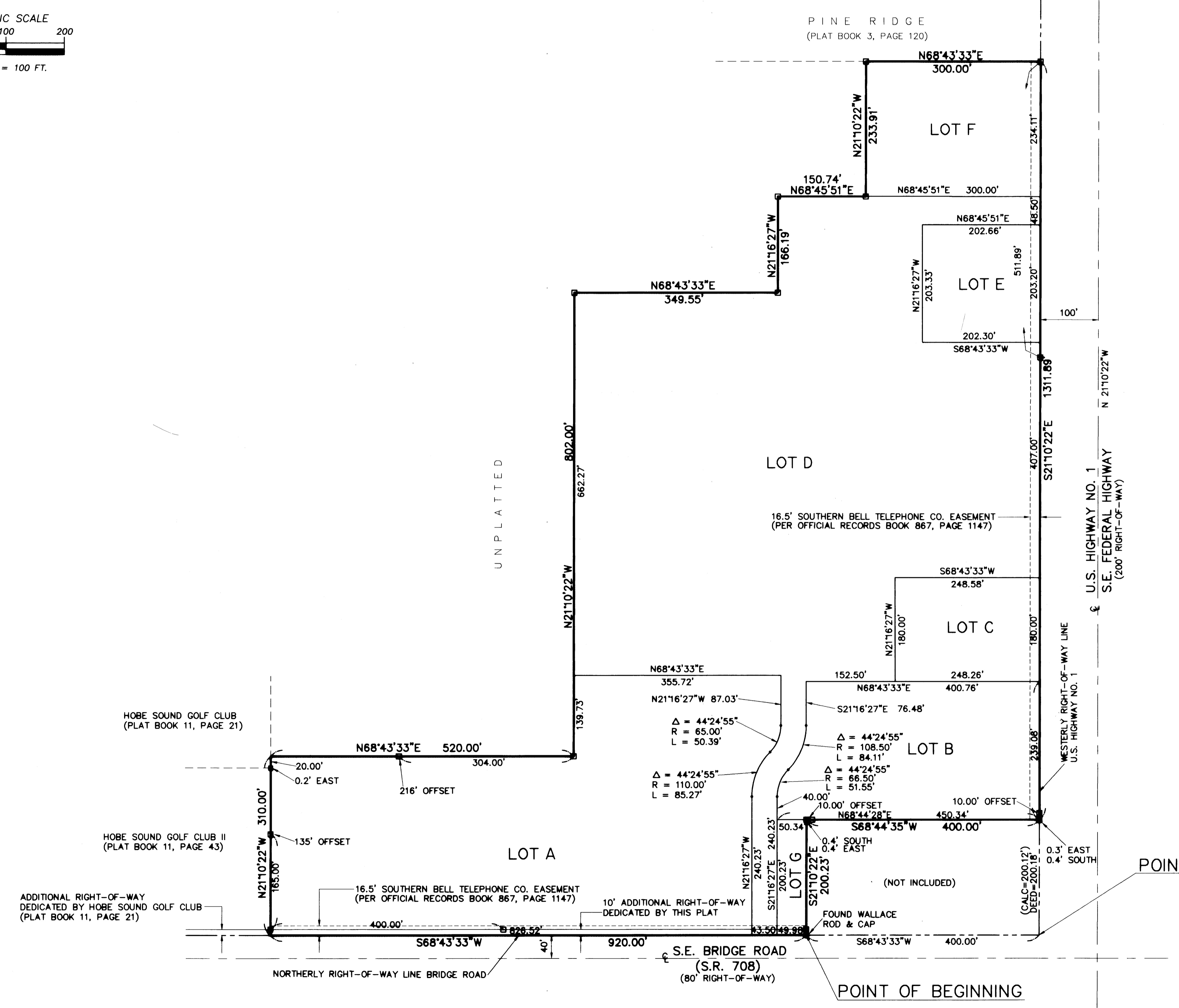
RECORDED PLAT BOOK 13
PAGE 83
FILE # 1127607

PLAT NO. 1 OF ISLAND CROSSINGS, A P.U.D.(C)

LYING IN THE GOMEZ GRANT, MARTIN COUNTY, FLORIDA
BEING A REPLAT OF A PORTION OF THE GOMEZ GRANT
AND JUPITER ISLAND PLAT, AS RECORDED IN PLAT BOOK 1, PAGE 80
PALM BEACH (NOW MARTIN) COUNTY, FLORIDA



GRAPHIC SCALE
0 50 100 200
1 INCH = 100 FT.



- LEGEND:
- - DENOTES P.R.M. (PERMANENT REFERENCE MONUMENT) SET NO. LS 4533
 - - DENOTES P.R.M. (PERMANENT REFERENCE MONUMENT) FOUND 4"X 4" CONCRETE MONUMENT
 - ⊕ - DENOTES CENTERLINE

Note: Preserve Areas may not be altered except in compliance with the Preserve Area Management Plan Approved by Martin County, which Plan is recorded in O.R. Book 1123, Page 647, public records of Martin County, Florida.

BEARING BASE:
THE CENTERLINE OF U.S. HIGHWAY NO. 1 IS TAKEN TO BEAR
N 21°10'22"W AND ALL OTHER BEARINGS SHOWN HEREON
ARE RELATIVE THERETO.

LINDAHL, BROWNING, FERRARI, & HELLSTROM, INC.
CONSULTING ENGINEERS, PLANNERS & SURVEYORS

210 JUPITER LAKES BLVD. BLDG. 5000, SUITE 104 JUPITER, FL 33468 407-748-9248	2400 S.E. MONTEREY ROAD SUITE 300 STUART, FL 34996 407-288-3883	2222 COLONIAL ROAD SUITE 201 FT. PIERCE, FL 34950 407-461-2450	2000 PALM BEACH LAKES BLVD. SUITE 702 WEST PALM BEACH, FL 33409 407-684-3375
---	--	---	---